

Filters

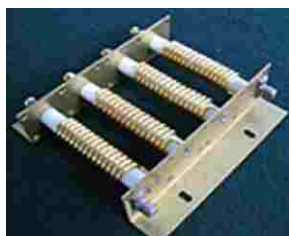
Filters are available for Low pass, High pass, Band pass and Band reject functions in different configurations such as lumped, mechanical cavity or distributed elements. The filters cover the frequency range from DC to 10 GHz, for narrow and wide bandwidth applications. Duplexer series of filters allow simultaneous receiver / transmitter operation through a common antenna port. These filters cover frequency bands from 30 MHz to 3000 MHz. Filter configuration in each type is of LC type, Cavity type or Comblines type. Customized high power filters with power handling capabilities of 1 kW can be developed up to 1 GHz frequency.



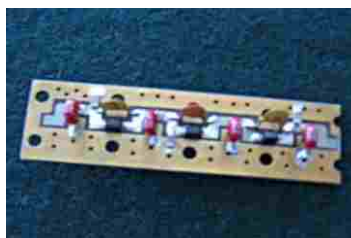
Comblines



Cavity



Helical Restorator



Lumped Element

Features

- Low insertion loss
- Low VSWR
- High power handling
- Stable at various temperatures
- Steep cut off

Frequency	VSWR	Max Power rating
1.5 - 30 MHz	1.5 : 1	1000 W
10 - 100 MHz	1.5 : 1	200 W
135 - 175 MHz	1.5 : 1	125 W
100 - 250 MHz	1.5 : 1	125 W
250 - 500 MHz	1.5 : 1	100 W
100 - 500 MHz	1.5 : 1	125 W
225 - 400 MHz	1.5 : 1	80 W
100 - 156 MHz	1.5 : 1	50 W
815 - 875 MHz	1.5 : 1	30 W
860 - 915 MHz	1.5 : 1	30 W
1500 MHz	1.5 : 1	10 W
1520 to 1560 MHz	1.5 : 1	30 W